

# 1 Contents

<b>1 Contents</b> .....	<b>1</b>
<b>2 Overview</b> .....	<b>2</b>
2.1 For your safety .....	2
2.2 Proper usage .....	2
2.3 Short description of the working steps required .....	2
2.4 Re-equipment set.....	2
<b>3 Conversion</b> .....	<b>3</b>

## 2 Overview

### 2.1 For your safety

**⚠ CAUTION**



**Mechanical conversion!**

**Observe all safety precautions and accident prevention regulations when undertaking machine conversion work, in order to prevent injuries.**

- Observe the safety precautions given in the standard operating instructions.
- Observe accident prevention regulations!

### 2.2 Proper usage

These instructions apply only for the conversion of the following machines:

- TETRIX 400, 500 and PHOENIX 400, 500 machine series

**The dirt filter can be used in places with unusually high levels of dirt and dust in the ambient air. The filter reduces the duty cycle of the welding machine via the reduced flow of cooling air. The filter must be disassembled and cleaned regularly depending on the level of dirt (blow out with compressed air).**

### 2.3 Short description of the working steps required

- Replacement of three fixing screws in the housing.
- Inserting and arresting the dirt filter.

### 2.4 Re-equipment set

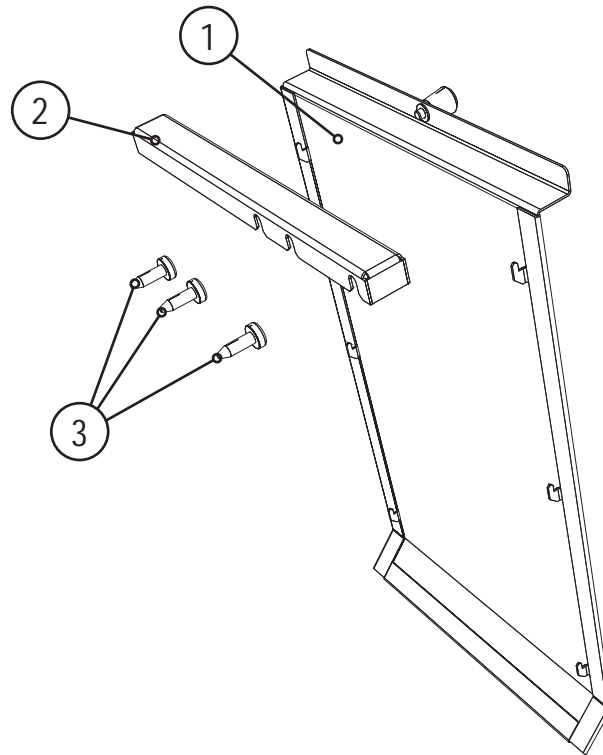


Figure 2-1

Item	Designation	Type	Item no.	Quantity
(1)	Dirt filter	F357.5X210X26.7	094-011761-00000	1
(2)	Fixing plate	BAF207.5X20X14	094-012384-00000	1
(3)	Threaded grooved pin	M5X16, COMBITORX T25	094-007915-00000	3

### 3 Conversion

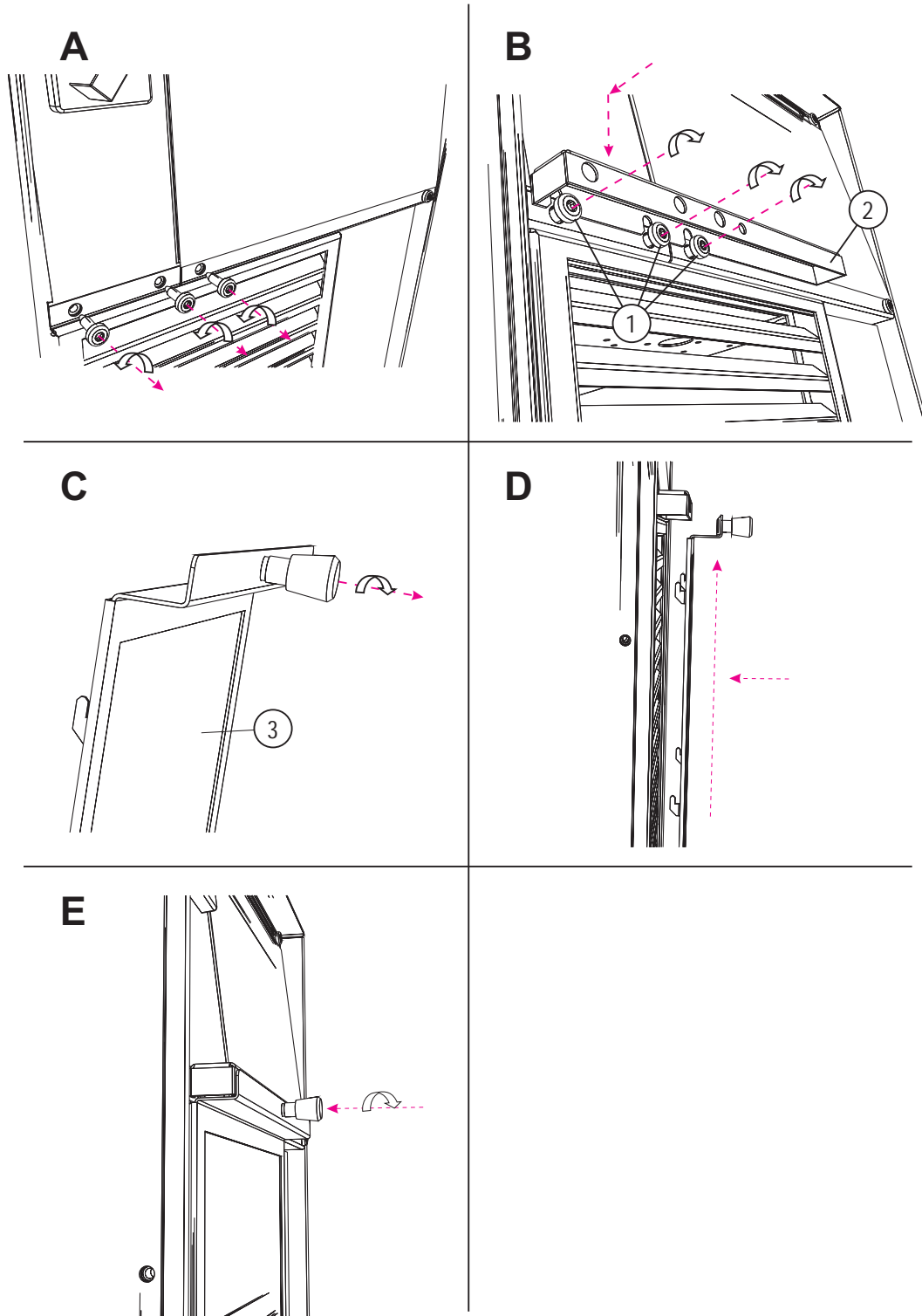


Figure 3-1

The machine is now ready for welding.



Keep the conversion instructions with the machine documentation.