



Transport systems

Trolley 39-1.1 DG

General instructions

CAUTION



Read the operating instructions!

The operating instructions provide an introduction to the safe use of the products.

- Read the operating instructions for all system components!
- Observe accident prevention regulations!
- Observe all local regulations!
- Confirm with a signature where appropriate.

NOTE



In the event of queries on installation, commissioning, operation or special conditions at the installation site, or on usage, please contact your sales partner or our customer service department on +49 2680 181-0.

A list of authorised sales partners can be found at www.ewm-group.com.

Liability relating to the operation of this equipment is restricted solely to the function of the equipment. No other form of liability, regardless of type, shall be accepted. This exclusion of liability shall be deemed accepted by the user on commissioning the equipment.

The manufacturer is unable to monitor whether or not these instructions or the conditions and methods are observed during installation, operation, usage and maintenance of the equipment.

An incorrectly performed installation can result in material damage and injure persons as a result. For this reason, we do not accept any responsibility or liability for losses, damages or costs arising from incorrect installation, improper operation or incorrect usage and maintenance or any actions connected to this in any way.

1 Contents

1	Contents	3
2	Safety instructions	4
2.1	Notes on the use of these operating instructions	4
2.2	Explanation of icons.....	5
2.3	General	6
2.4	Transport and installation	7
2.4.1	Lifting by crane	9
3	Intended use	10
4	Machine description – quick overview	11
5	Design and function	12
5.1	Fixing the welding machine	12
5.2	Connection cables	16
5.3	Using the transport system	17
5.4	Lifting by crane.....	18
6	Maintenance, care and disposal	19
6.1	General	19
6.2	Maintenance work, intervals	19
6.2.1	Daily maintenance tasks	19
6.2.2	Monthly maintenance tasks.....	19
6.3	Maintenance work.....	19
6.4	Disposing of equipment	19
6.4.1	Manufacturer's declaration to the end user	20
6.5	Meeting the requirements of RoHS	20
7	Technical data	21
8	Appendix A	22
8.1	Overview of EWM branches	22

2 Safety instructions

2.1 Notes on the use of these operating instructions

DANGER

Working or operating procedures which must be closely observed to prevent imminent serious and even fatal injuries.

- Safety notes include the "DANGER" keyword in the heading with a general warning symbol.
- The hazard is also highlighted using a symbol on the edge of the page.

WARNING

Working or operating procedures which must be closely observed to prevent serious and even fatal injuries.

- Safety notes include the "WARNING" keyword in the heading with a general warning symbol.
- The hazard is also highlighted using a symbol in the page margin.

CAUTION

Working or operating procedures which must be closely observed to prevent possible minor personal injury.

- The safety information includes the "CAUTION" keyword in its heading with a general warning symbol.
- The risk is explained using a symbol on the edge of the page.

CAUTION

Working and operating procedures which must be followed precisely to avoid damaging or destroying the product.

- The safety information includes the "CAUTION" keyword in its heading without a general warning symbol.
- The hazard is explained using a symbol at the edge of the page.

NOTE








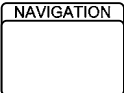





Special technical points which users must observe.

- Notes include the "NOTE" keyword in the heading without a general warning symbol.

Instructions and lists detailing step-by-step actions for given situations can be recognised via bullet points, e.g.:

- Insert the welding current lead socket into the relevant socket and lock.

2.2 Explanation of icons

Symbol	Description
	Press
	Do not press
	Turn
	Switch
	Switch off machine
	Switch on machine
	ENTER (enter the menu)
	NAVIGATION (Navigating in the menu)
	EXIT (Exit the menu)
	Time display (example: wait 4s/press)
	Interruption in the menu display (other setting options possible)
	Tool not required/do not use
	Tool required/use

2.3 General

DANGER



Do not carry out any unauthorised repairs or modifications!

To avoid injury and equipment damage, the unit must only be repaired or modified by specialist, skilled persons!

The warranty becomes null and void in the event of unauthorised interference.

- Appoint only skilled persons for repair work (trained service personnel)!

WARNING



Risk of accidents if these safety instructions are not observed!

Non-observance of these safety instructions is potentially fatal!

- Carefully read the safety information in this manual!
- Observe the accident prevention regulations in your country.
- Inform persons in the working area that they must observe the regulations!



Validity of this document!

This document is only valid in combination with the operating instructions for the power source being used (welding machine)!

- Read the operating instructions, in particular the safety instructions for the power source (welding machine)!

CAUTION



Obligations of the operator!

The respective national directives and laws must be observed for operation of the machine!

- National implementation of the framework directive (89/391/EEG), as well as the associated individual directives.
- In particular, directive (89/655/EEG), on the minimum regulations for safety and health protection when staff members use equipment during work.
- The regulations regarding work safety and accident prevention for the respective country.
- Setting up and operating the machine according to IEC 60974-9.
- Check at regular intervals that users are working in a safety-conscious way.
- Regular checks of the machine according to IEC 60974-4.

2.4 Transport and installation

WARNING



Improper work carried out!

In the event of improper work carried out on the display stand, the display stand may lose stability, tip over and result in serious injury!

- Only use the construction and fitting parts supplied!
- Do not load the display stand without reinforcement panels affixed!

CAUTION



Improperly secured equipment!

Equipment, equipment combinations and accessories incorrectly fastened onto transport systems can tip over during transport and cause injuries!

- Only used the original parts supplied to fasten the equipment.
- Use the systems only for transporting the machines given in the "Intended use" chapter.
- Check the fixing points before each transport and at regular intervals.



Damage due to supply lines not being disconnected!

During transport, supply lines which have not been disconnected (mains supply leads, control leads, etc.) may cause hazards such as connected equipment tipping over and injuring persons!

- Disconnect supply lines!



Risk of tipping!

When moving or setting up, the transport vehicle can tip over and injure persons or become damaged.

- Move or set up the machine on level, firm surfaces.
- Secure add-on parts using suitable equipment.
- Replace damaged transport rollers and their fixing elements.

NOTE

 The warning signs are illustrated with different machines.

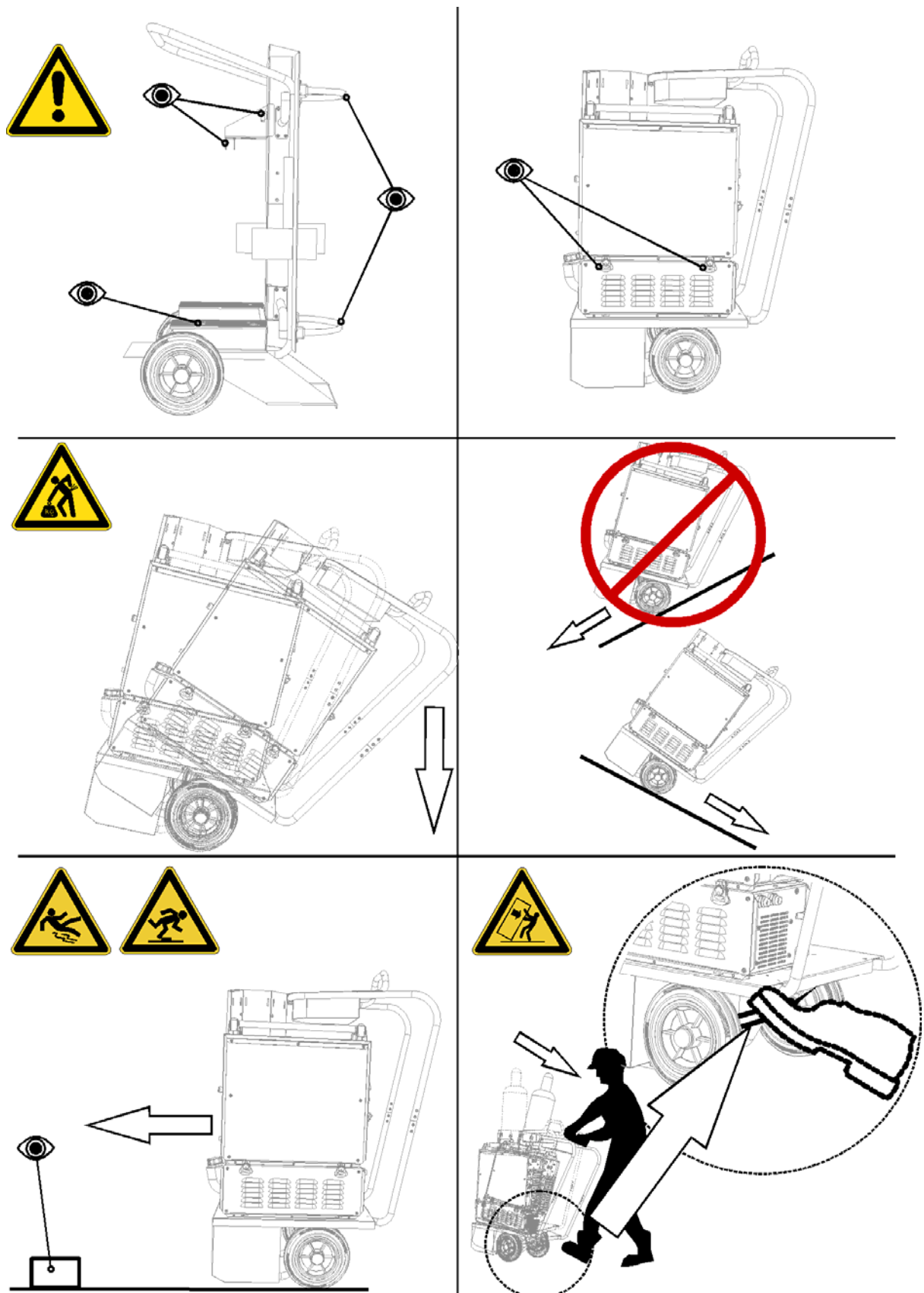


Figure 2-1

2.4.1 Lifting by crane

 **DANGER****Risk of injury during lifting by crane!**

When lifting the unit by crane there is a risk of serious injuries due to the units or add-on modules falling down!

- Ensure that there is an even load distribution!
- Observe the lifting principle (see Fig.)!
- Use shackles and lifting hooks of the appropriate size!
- Do not lift any other loads at the same time!
- Avoid jerky movements when raising or lowering!

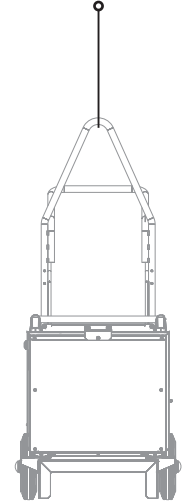


Fig. Lifting principle

3 Intended use

WARNING



Hazards due to improper usage!

Hazards may arise for persons, animals and material objects if the equipment is not used correctly. No liability is accepted for any damages arising from improper usage!

- The equipment must only be used in line with proper usage and by trained or expert staff!
- Do not modify or convert the equipment improperly!

CAUTION



Risk of accidents due to improperly prepared transport vehicle!

Depending on the machine series the transport vehicle has to be adapted to mount the machine. Failing to adapt the transport vehicle can cause the machine being transported to topple and lead to injuries!

Transport with the following machines:

- Taurus 505

The Trolley 39-1.1 transport system is suitable for:

- moving the stated machines
- moving properly fixed machines and add-on parts that are suitably secured

Any other use of the transport systems is regarded as "improper" and no liability is assumed for any damage arising therefrom.

4 Machine description – quick overview

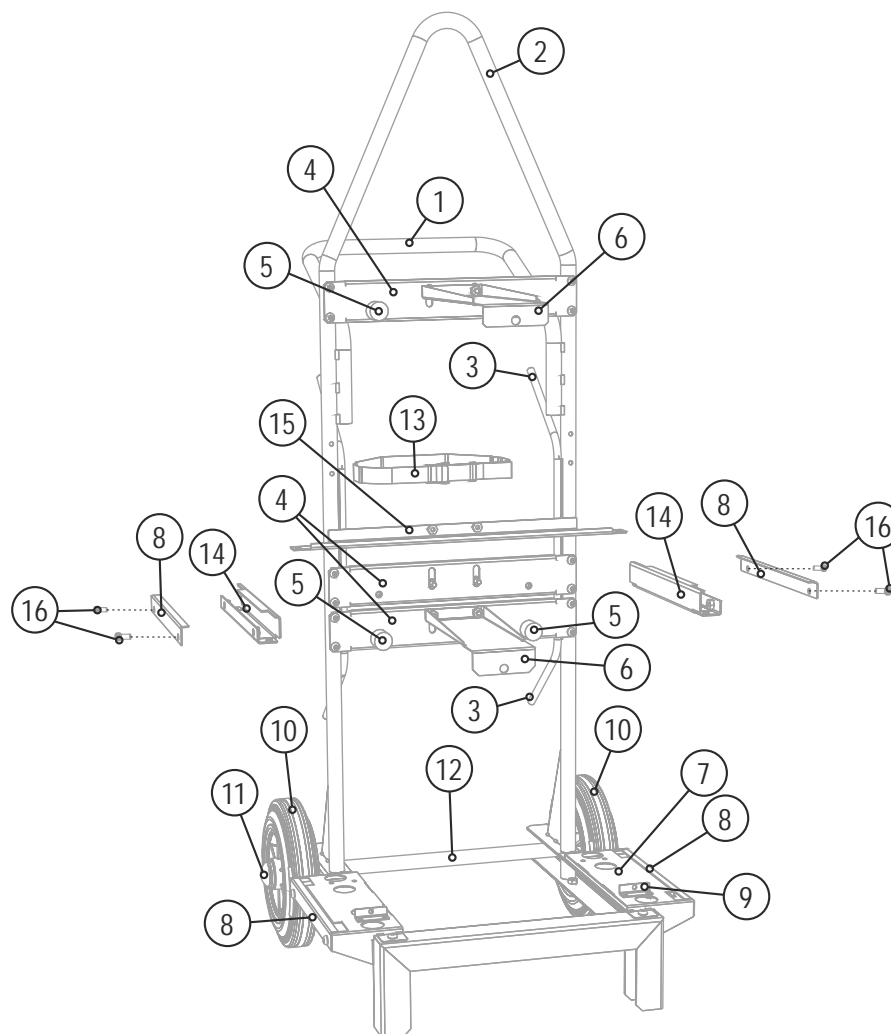


Figure 4-1

Item	Symbol	Description
1		Carrying handle
2		Bracket for lifting by crane
3		Cable holder
4		Metal sheet cross arm
5		Buffer
6		Machine hold-down device
7		Machine carrier plate
8		Clamping plate
9		Mounting clip
10		Wheels
11		Cap, wheel fastening
12		Axle
13		Strap, fastening the machine
14		Machine support panel
15		Traverse panel
16		Oval-head screw

5 Design and function

5.1 Fixing the welding machine

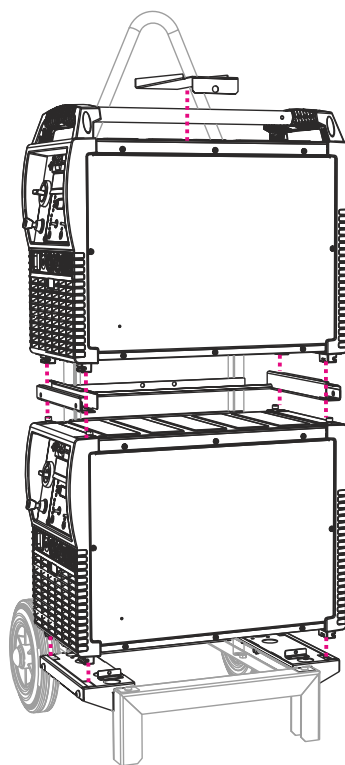


Figure 5-1

A

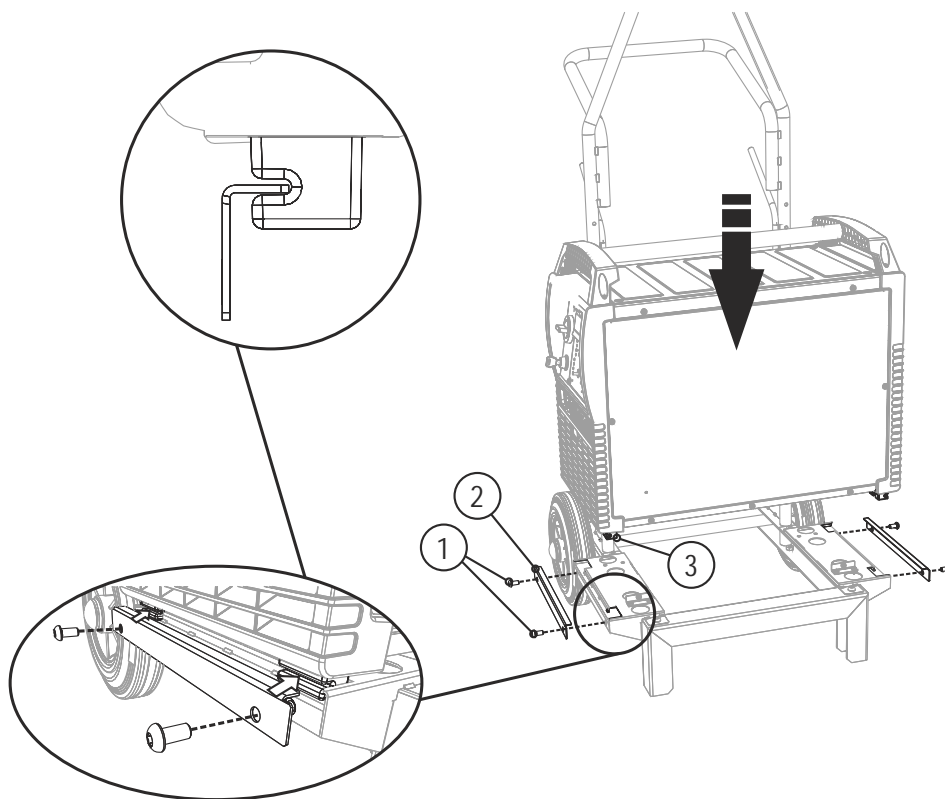


Figure 5-2

B

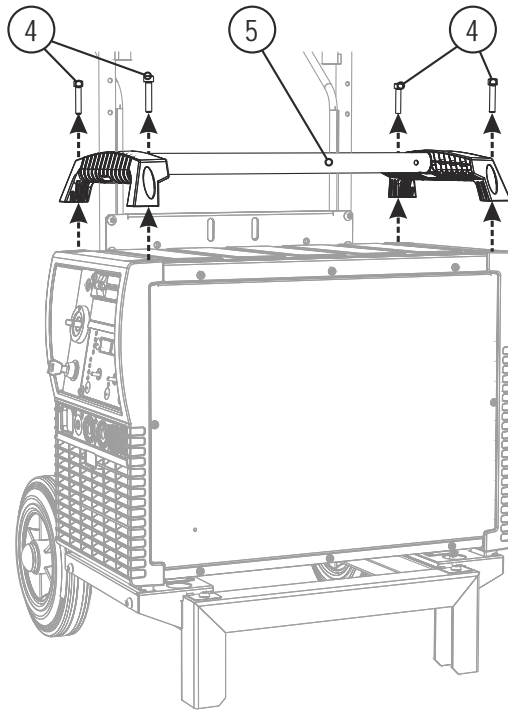


Figure 5-3

C

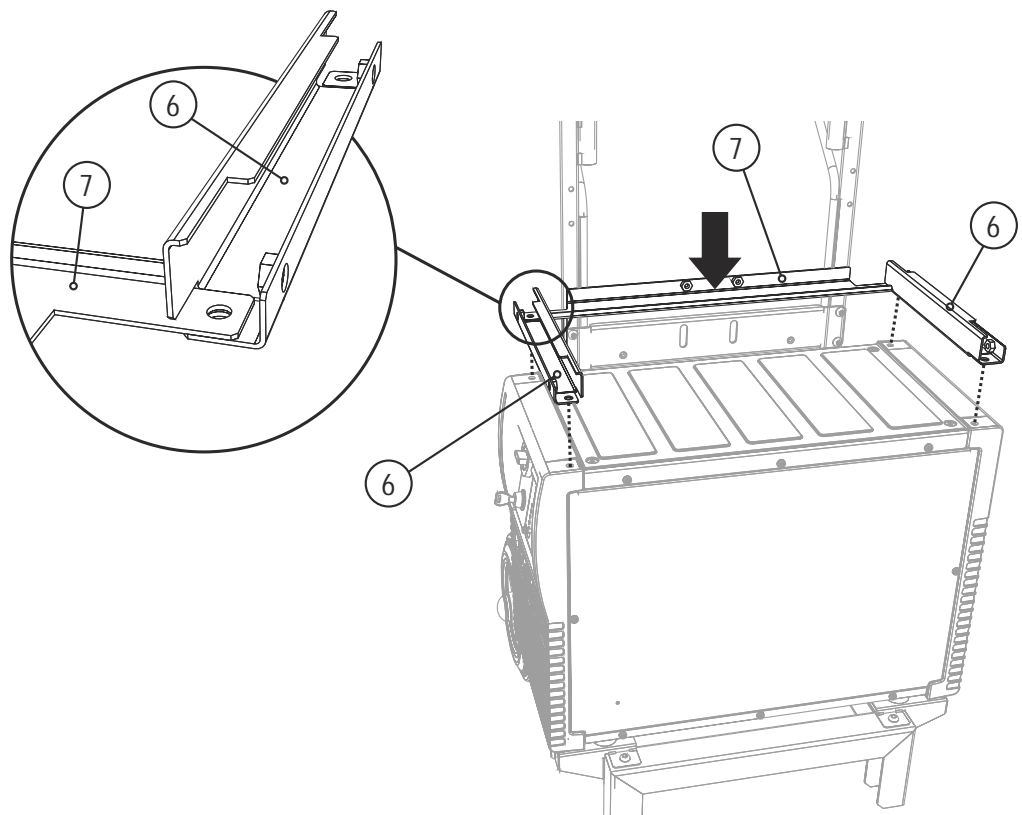


Figure 5-4

D

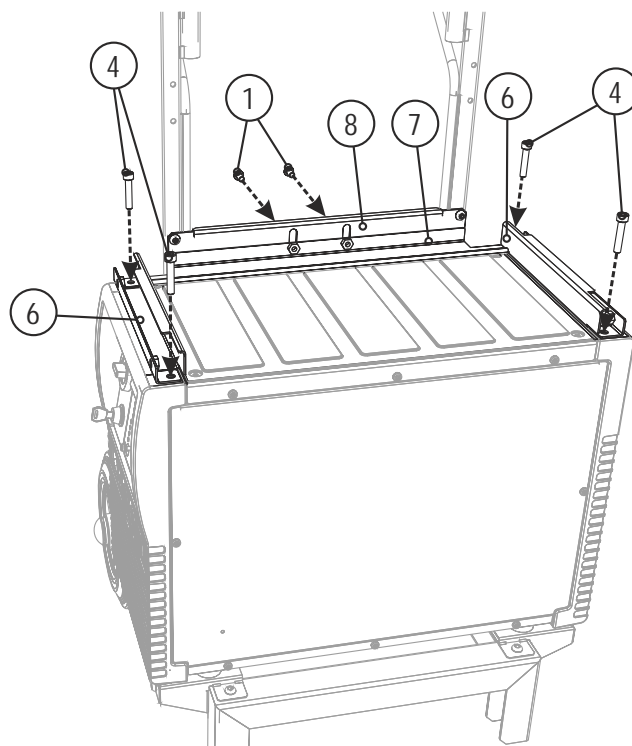


Figure 5-5

E

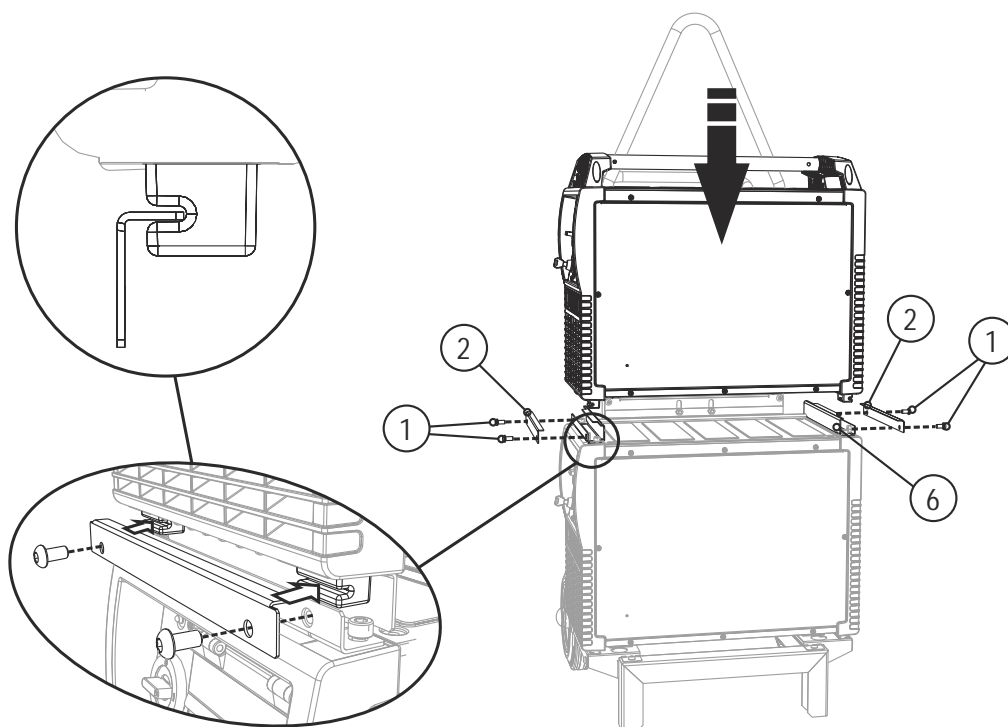


Figure 5-6

F

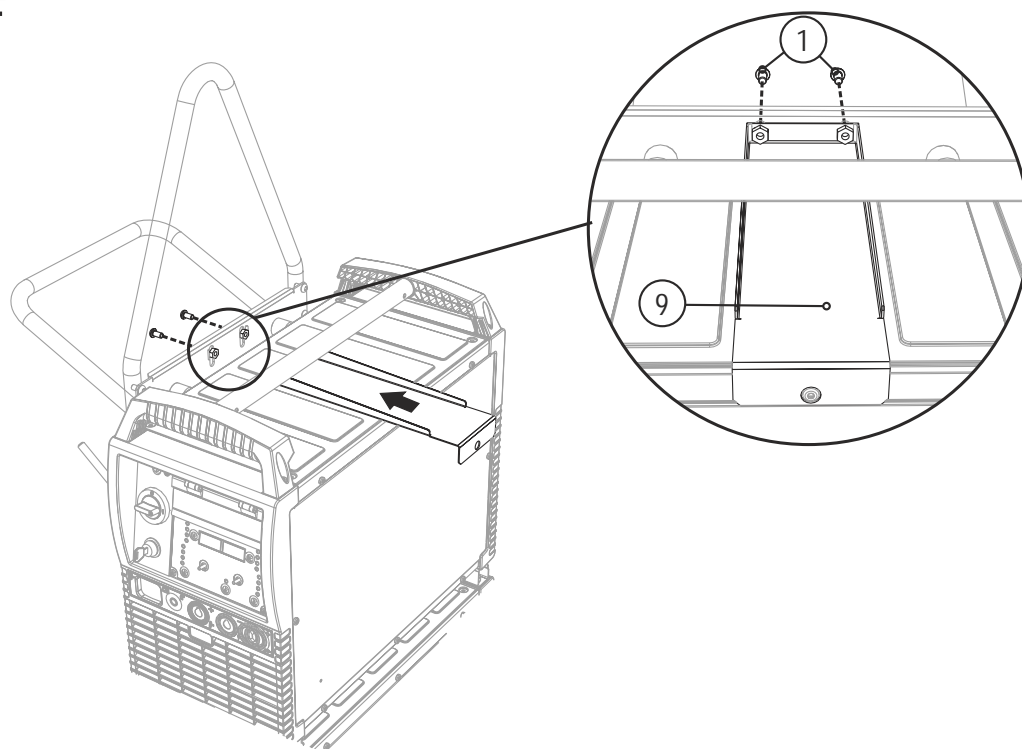


Figure 5-7

Item	Symbol	Description
1		Oval-head screw
2		Clamping plate
3		Machine feet
4		M8x40 hexagonal screw
5		Carrying handle
6		Machine support panel
7		Traverse panel
8		Metal sheet cross arm
9		Machine hold-down device

- Place the welding machine with its feet in the recesses provided (A).
- Attach the retaining panels with 2 M8x16 each to the trolley (A).
- Remove the transport handle of the mounted machine (B).
- Stick the machine support panel and the traverse panel together (C).
- Attach the panels using the M8x40 hexagonal socket screws from the transport handle and 2 M8x16 each to the trolley (D).
- Place the welding machine with its feet in the recesses provided (E).
- Attach the retaining panels with 2 M8x16 each to the machine support panel (E).
- Attach the hold-down device with 2 M8x16 each to the trolley (F).

5.2 Connection cables

NOTE



The figure shows an example of how to use the cable support for the connection cable.

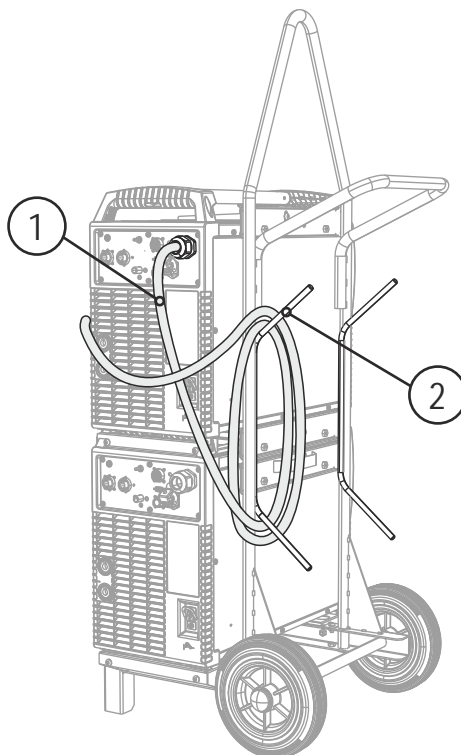


Figure 5-8

Item	Symbol	Description
1		Connection cable
2		Cable holder

5.3 Using the transport system

CAUTION**Improperly secured equipment!**

Equipment, equipment combinations and accessories incorrectly fastened onto transport systems can tip over during transport and cause injuries!

- Only use the original parts supplied to fasten the equipment.
- Use the systems only for transporting the machines given in the "Intended use" chapter.
- Check the fixing points before each transport and at regular intervals.

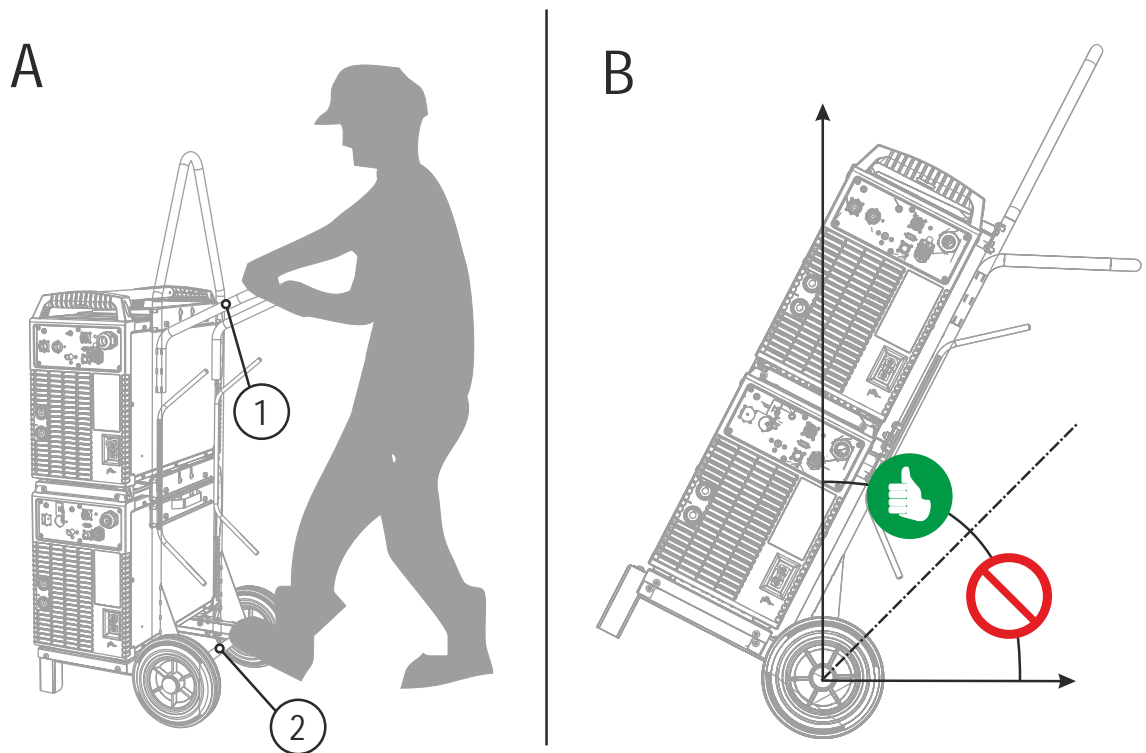


Figure 5-9

Item	Symbol	Description
1		Carrying handle
2		Axle

- Hold the trolley by the transport handle.
- Secure the trolley at the axle with your foot.
- Tilt the trolley at an angle of 40° to move it.

5.4 Lifting by crane



DANGER



Risk of injury during lifting by crane!

When lifting the unit by crane there is a risk of serious injuries due to the units or add-on modules falling down!

- Ensure that there is an even load distribution!
- Observe the lifting principle (see Fig.)!
- Use shackles and lifting hooks of the appropriate size!
- Do not lift any other loads at the same time!
- Avoid jerky movements when raising or lowering!

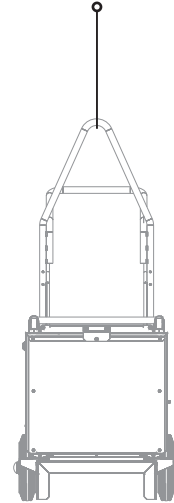


Fig. Lifting principle

6 Maintenance, care and disposal

6.1 General

When used in the specified environmental conditions and under normal operating conditions, this machine is largely maintenance-free and requires a minimum of care.

There are some points which should be observed to guarantee fault-free operation of your welding machine. These include regular cleaning and inspection as described below, depending on the degree of soiling in the surroundings and how long the transport vehicle is in use.

6.2 Maintenance work, intervals

6.2.1 Daily maintenance tasks

- Gas cylinder securing elements
- Other, general condition
- Keep moving parts clean.
- Wheels and their securing elements
- Transport elements (strap, lifting lugs, handle)

6.2.2 Monthly maintenance tasks

- Tighten the screw connections.
- Check bearings for damage.
- Service at regular intervals and check for errors.
- Clean surfaces and glass with a damp cloth (do not use aggressive cleaning agents)!

6.3 Maintenance work



DANGER



Do not carry out any unauthorised repairs or modifications!

To avoid injury and equipment damage, the unit must only be repaired or modified by specialist, skilled persons!

The warranty becomes null and void in the event of unauthorised interference.

- Appoint only skilled persons for repair work (trained service personnel)!

Repair and maintenance work may only be performed by qualified authorised personnel; otherwise the right to claim under warranty is void. In all service matters, always consult the dealer who supplied the machine. Return deliveries of defective equipment subject to warranty may only be made through your dealer. When replacing parts, use only original spare parts. When ordering spare parts, please quote the machine type, serial number and item number of the machine, as well as the type designation and item number of the spare part.

6.4 Disposing of equipment

NOTE



Proper disposal!

The machine contains valuable raw materials, which should be recycled, and electronic components, which must be disposed of.

- Do not dispose of in household waste!
- Observe the local regulations regarding disposal!



6.4.1 Manufacturer's declaration to the end user

- According to European provisions (guideline 2002/96/EG of the European Parliament and the Council of January, 27th 2003), used electric and electronic equipment may no longer be placed in unsorted municipal waste. It must be collected separately. The symbol depicting a waste container on wheels indicates that the equipment must be collected separately.
This machine is to be placed for disposal or recycling in the waste separation systems provided for this purpose.
- According to German law (law governing the distribution, taking back and environmentally correct disposal of electric and electronic equipment (ElektroG) from 16.03.2005), used machines are to be placed in a collection system separate from unsorted municipal waste. The public waste management utilities (communities) have created collection points at which used equipment from private households can be disposed of free of charge.
- Information about giving back used equipment or about collections can be obtained from the respective municipal administration office.
- EWM participates in an approved waste disposal and recycling system and is registered in the Used Electrical Equipment Register (EAR) under number WEEE DE 57686922.
- In addition to this, returns are also possible throughout Europe via EWM sales partners.

6.5 Meeting the requirements of RoHS

We, EWM HIGHTEC Welding GmbH Mündersbach, hereby confirm that all products supplied by us which are affected by the RoHS Directive, meet the requirements of the RoHS (Directive 2002/95/EC).

7 Technical data

Dimensions (LxWxH) in mm	655 x 625 x 1540
Weight without accessories	Approx. 27 kg
Constructed to standard	IEC 60974-1

8 Appendix A

8.1 Overview of EWM branches

Headquarters

EWM HIGHTEC WELDING GmbH
Dr. Günter-Henle-Straße 8
56271 Mündersbach · Germany
Tel: +49 2680 181-0 · Fax: -244
www.ewm-group.com · info@ewm-group.com

Technology centre

EWM HIGHTEC WELDING GmbH
Forststr. 7-13
56271 Mündersbach · Germany
Tel: +49 2680 181-0 · Fax: -144
www.ewm-group.com · info@ewm-group.com



Production, Sales and Service

EWM HIGHTEC WELDING GmbH
Dr. Günter-Henle-Straße 8
56271 Mündersbach · Germany
Tel: +49 2680 181-0 · Fax: -244
www.ewm-group.com · info@ewm-group.com

EWM HIGHTEC WELDING (Kunshan) Ltd.
10 Yuanshan Road, Kunshan · New & High-tech Industry Development Zone
Kunshan · Jiangsu · 215300 · People's Republic of China
Tel: +86 512 57867-188 · Fax: -182
www.ewm-kunshan.cn · info@ewm-kunshan.cn

EWM HIGHTEC WELDING AUTOMATION GmbH
Boxbachweg 4
08606 Oelsnitz/V. · Germany
Tel: +49 37421 20-300 · Fax: -318
www.ewm-automation.de · info@ewm-automation.de

EWM HIGHTEC WELDING s.r.o.
Tr. 9. května 718 / 31
407 53 Jirřikov · Czech Republic
Tel: +420 412 358-551 · Fax: -504
www.ewm-jirřikov.cz · info@ewm-jirřikov.cz

Sales and Service Germany

EWM HIGHTEC WELDING GmbH
Vertriebs- und Technologiezentrum
Grünauer Fenn 4
14712 Rathenow · Tel: +49 3385 49402-0 · Fax: -20
www.ewm-rathenow.de · info@ewm-rathenow.de

EWM HIGHTEC WELDING GmbH
Lindenstraße 1a
38723 Seesen-Rhüden · Tel: +49 5384 90798-0 · Fax: -20
www.ewm-seesen.de · info@ewm-seesen.de

EWM HIGHTEC WELDING GmbH
Sachsstraße 28
50259 Pulheim · Tel: +49 2234 697-047 · Fax: -048
www.ewm-pulheim.de · info@ewm-pulheim.de

EWM HIGHTEC WELDING GmbH
In der Florinskaul 14-16
56218 Mülheim-Kärlich · Tel: +49 261 988898-0 · Fax: -20
www.ewm-muelheim-kaerlich.de · info@ewm-muelheim-kaerlich.de

EWM HIGHTEC WELDING GmbH
Sälzerstr. 20
56235 Ransbach-Baumbach · Tel: +49 261 2623 9276-0 · Fax: -244
www.ewm-ransbach-baumbach.de · info@ewm-ransbach-baumbach.de

EWM HIGHTEC WELDING GmbH
Eiserfelder Straße 300
57080 Siegen · Tel: +49 271 3878103-0 · Fax: -9
www.ewm-siegen.de · info@ewm-siegen.de

EWM HIGHTEC WELDING GmbH
Vertriebs- und Technologiezentrum
Draisstraße 2a
69469 Weinheim · Tel: +49 6201 84557-0 · Fax: -20
www.ewm-weinheim.de · info@ewm-weinheim.de

EWM Schweißtechnik Handels GmbH
Rittergasse 1
89143 Blaubeuren · Tel: +49 7344 9191-75 · Fax: -77
www.ewm-blaubeuren.de · info@ewm-blaubeuren.de

EWM Schweißtechnik Handels GmbH
Heinkelstraße 8
89231 Neu-Ulm · Tel: +49 731 7047939-0 · Fax: -15
www.ewm-neu-ulm.de · info@ewm-neu-ulm.de

EWM HIGHTEC WELDING AUTOMATION GmbH
Steinfeldstrasse 15
90425 Nürnberg · Tel: +49 911 3841-727 · Fax: -728
www.ewm-automation.de · info@ewm-automation.de

Sales and Service International

EWM HIGHTEC WELDING GmbH
Fichtenweg 1
4810 Gmunden · Austria · Tel: +43 7612 778 02-0 · Fax: -20
www.ewm-gmunden.at · info@ewm-gmunden.at


EWM HIGHTEC WELDING UK Ltd.
Unit 2B Coopies Way · Coopies Lane Industrial Estate
Morpeth · Northumberland · NE61 6JN · Great Britain
Tel: +44 1670 505875 · Fax: -514305
www.ewm-morpeth.co.uk · info@ewm-morpeth.co.uk

EWM HIGHTEC WELDING (Kunshan) Ltd.
10 Yuanshan Road, Kunshan · New & High-tech Industry Development Zone
Kunshan · Jiangsu · 215300 · People's Republic of China
Tel: +86 512 57867-188 · Fax: -182
www.ewm-kunshan.cn · info@ewm-kunshan.cn

EWM HIGHTEC WELDING Sales s.r.o. / Prodejní a poradenské centrum
Tyrřova 2106
256 01 Beneřov u Prahy · Czech Republic
Tel: +420 317 729-517 · Fax: -712
www.ewm-benesov.cz · info@ewm-benesov.cz

EWM HIGHTEC WELDING FZCO / Regional Office Middle East
LOB 21 G 16 · P.O. Box 262851
Jebel Ali Free Zone · Dubai, UAE · United Arab Emirates
Tel: +971 48870-322 · Fax: -323
www.ewm-dubai.ae · info@ewm-dubai.ae

 Plants

 Branches

● More than 300 EWM sales partners worldwide